

Whole Family Case Management

HOMELESS EDUCATION STAFF

The team provides a comprehensive array of technical assistance, educational advocacy, and direct case management services.

The staff consists of:

- 1 part-time Program Coordinator (.12 FTE)
- 1 full-time Program Manager, (1.0 FTE)
- 1 part-time Student Support Practitioners (.24 FTE)
- 1 part-time Community Liaison (.30FTE),
- 1 part-time Staff Secretary (.13 FTE)

HOMELESS EDUCATION PROGRAM

PCOE
GOLD IN EDUCATION
www.pcoe.org

OVERVIEW: The Placer County Office of Education's Homeless Education Team provides support to all 17 county school districts and 21 charter schools around identifying and supporting homeless (McKinney-Vento) students and their families. This team provides a comprehensive array of direct services, educational advocacy, and educational case management services. The McKinney-Vento Homeless Assistance Act ensures educational rights and protections for children and youth experiencing homelessness. The definition of homelessness is broad under McKinney-Vento and includes any students and their families who lack fixed, regular, or adequate housing and are living in: emergency shelters, transitional housing, motels and hotels, trailer parks or campgrounds due to the lack of alternative adequate accommodations, doubling up (sharing the housing of others due to economic hardship, loss of housing, unsafe housing, etc.).

Services We Provide

For school districts, charter schools, county and community partners:

- Trainings/Professional Development on McKinney-Vento identification, implementation, related education code, and rights for students and their families
- Assistance with identifying School Of Origin and enrollment processes
- Development and distribution of McKinney-Vento posters
- Host countywide quarterly meetings for McKinney-Vento school district liaisons and community partners
- Guidance on how to connect to local cultural supports
- Assistance with navigating school(s) transportation
- Trauma-informed school and community engagement
- Linkages and support for Evacuee and Refugee students
- Representation at local homeless councils (e.g. Continuum of Care, Homeless Resource Council of the Sierras, Placer Consortia on Homelessness)
- Student attendance support (e.g. conducting home/shelter visits)

For students and caregivers:

- Whole Family Case Management including collaboration with housing case managers, county workers, and school district staff in order to coordinate services across agencies and providers
- Assistance with housing navigation, including identifying affordable housing options, exploring housing assistance programs, and completing applications
- Assistance with accessing basic needs, including food, clothing, bedding, healthcare and insurance, and transportation
- Linkage to school and community-based services, including tutoring, mentoring, counseling, etc.
- Participate in and advocacy at school and county-based meetings (e.g. SSTs, IEPs, CFTs, Wrap, CWIT)
- Supporting linkages to mental health and/or substance use treatment for student and parent(s)
- Connection with PCOE Early Childhood Education department for free/low cost child care options



Alicia Rozum
Coordinator
arozum@placercoe.org
530.745.1302



Chris Dunbaugh
Program Manager
cdunbaugh@placercoe.org
530.745.1486



Jessica LeFohn
Secretary
jlefohn@placercoe.org
530.745.1467



Ambrosia Cramer
Family & Youth Community
Liaison
acramer@placercoe.org
916.741.0613

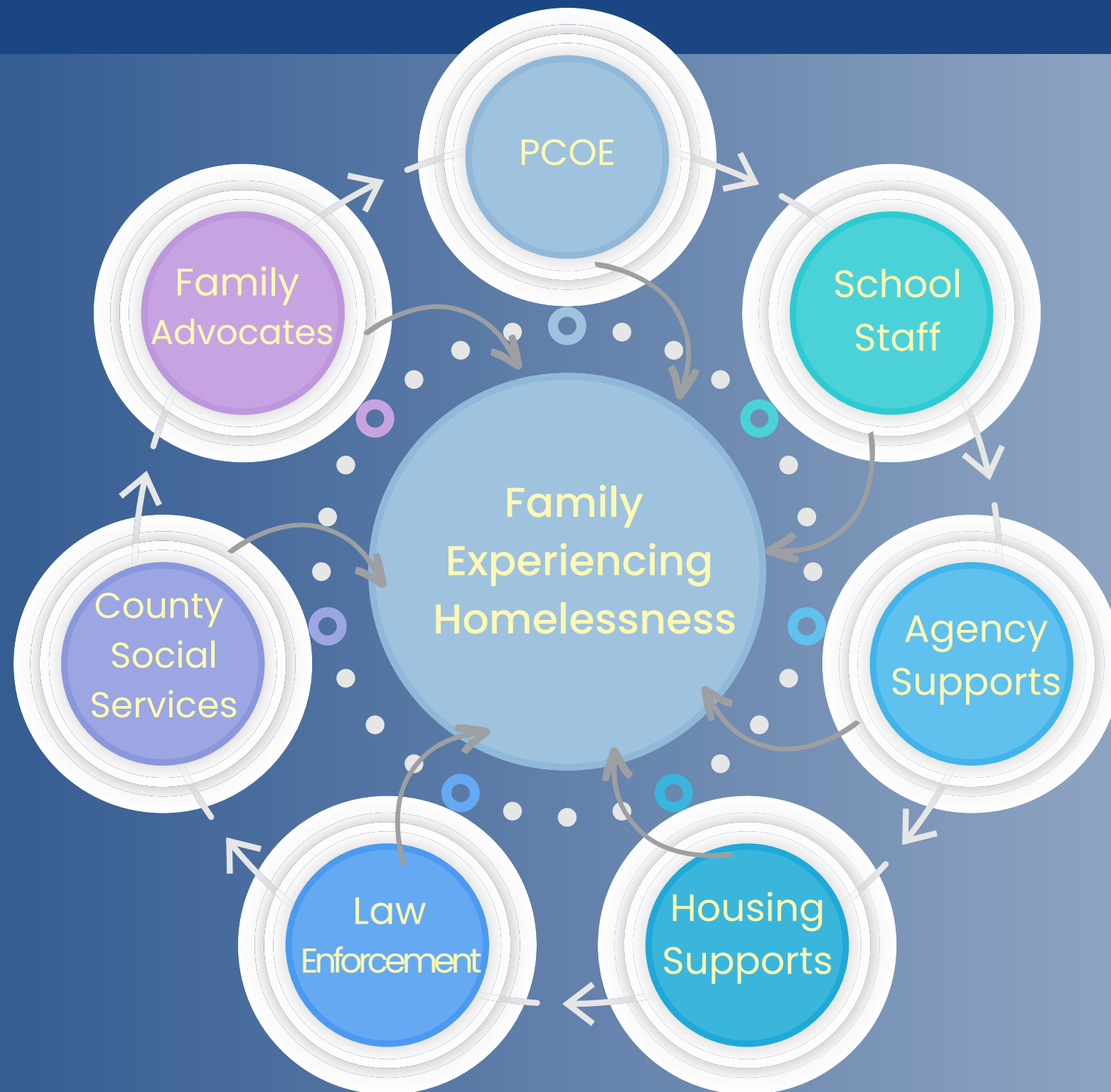


Cheryl Bryan
Student Support Practitioner
cbryan@placercoe.org
916.784.6491

FAMILY TRYING TO NAVIGATE SERVICES



FAMILY EXPERIENCING COORDINATED SERVICES



WHOLE FAMILY CASE MANAGEMENT

Whole Family Case Management involves a PCOE Homeless Education staff member coordinating closely alongside the family, housing case managers, Homeless Education Liaisons or designated school staff (e.g. school counselors, administrators,) and social services agency representatives to wrap the family and youth with supports.



LATINO LEADERSHIP COUNCIL (LLC) PARTNERSHIP

PCOE has deepened their partnership with Latino Leadership Council. LLC is a trusted resource for Latino/x, Spanish-speaking, refugee, and undocumented families throughout the Placer region. PCOE and LLC meet monthly to coordinate services for families in common and review new referrals.

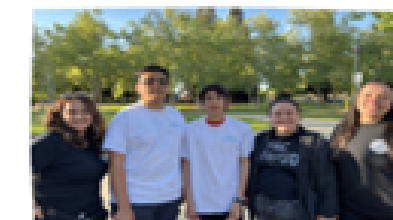
The PCOE team works in tandem with LLC Promotoras to serve families and students, as well as building the capacity of the entire LLC staff through trainings and technical assistance.

Youth services!

Our Youth Promotores are bilingual and bicultural youth professionals who work with diverse Latino/a youth. We assist them in navigating systems, accessing essential resources, providing advocacy, and linking them to community support as needed.



OUR YOUTH PROMOTORES PROVIDE SUPPORT WITH:



- Mental health
- Goal Setting
- Identity building
- Educational support
- Connecting youth to resources

In collaboration with the parents, we aim to create a healthy and holistic support network for Latino/a youth to thrive in their community.

Need help or support? Call, text, or email
Amy Barrios
(323) 481-7575
Amyb@LatinoLeadershipCouncil.org

All of our services are FREE.

