

Placer County Office of Education
RFP for Lease-Leaseback Construction Services
*Office Building Tenant Improvements, Annex Building Alterations,
& Site Improvements @ Various Sites*
ADDENDUM NO. 1

Friday, August 18, 2023

District: Placer County Office of Education
360 Nevada Street
Auburn, CA 95991
Contact: Martin Fregoso

Job Location: Various Three (3) Sites:
1. 1400 Stanford Ranch / Rocklin, CA 95765
2. 365 Nevada Street / Auburn, CA 95603
3. 360 Nevada Street / Auburn, CA 95603

Architect: Hibser Yamauchi Architects, Inc.
4602 2nd St
Davis, CA 95618

This Addendum has been prepared to clarify, modify, delete, or add to the drawings and/or specifications for the above referenced project, and revisions to items listed here shall supersede description thereof prior to the above stated date. All conditions not specifically referenced here shall remain the same. It is the obligation of the Prime Contractor to make subcontractors aware of any items herein that may affect submitted bids. Acknowledge receipt of this addendum by inserting its number and date in the bidding documents. Failure to do so may subject bidder to disqualification. All addenda items refer to the plans and specifications unless specifically noted otherwise.

PART A – GENERAL

1.1 1400 Stanford Ranch – HVAC System Alterations

- A. **CLARIFICATION** to overall HVAC system design. Proposed alterations will be modified due to coordination with repair work by Owner and provided in forthcoming addendum.

PART B – BIDDING AND CONTRACT REQUIREMENTS

1.2 Proposal Deadline/Due Date

- A. **REVISE** proposal deadline to **September 7, 2023 at 1:00pm.**

1.3 RFP-Q LLB Services

- A. **REVISE** required services to lease-leaseback construction services. Pre-construction services are not required and shall be excluded from bid.

Placer County Office of Education
RFP for Lease-Leaseback Construction Services
*Office Building Tenant Improvements, Annex Building Alterations,
& Site Improvements @ Various Sites*
ADDENDUM NO. 1

PART C – CHANGES TO TECHNICAL SPECIFICATIONS

None.

PART D – CHANGES TO DRAWINGS:

- 1.4 **365 Nevada Street - Sheet C0.0 – Civil General Notes and Abbreviations**
 A. **ADD** sheet in its entirety. **See attached ‘Sheet C0.0.’**
- 1.5 **365 Nevada Street - Sheet C0.1 – Topographic Survey**
 A. **ADD** sheet in its entirety. **See attached ‘Sheet C0.1.’**
- 1.6 **365 Nevada Street - Sheet C1.1 – Demolition Plan**
 A. **ADD** sheet in its entirety. **See attached ‘Sheet C1.1.’**
- 1.7 **365 Nevada Street - Sheet C2.1 – Grading Plan**
 A. **ADD** sheet in its entirety. **See attached ‘Sheet C2.1.’**
- 1.8 **365 Nevada Street - Sheet C3.1 – Paving and Striping Plan**
 A. **ADD** sheet in its entirety. **See attached ‘Sheet C3.1.’**
- 1.9 **365 Nevada Street - Sheet C4.1- Erosion Control Plan**
 A. **ADD** sheet in its entirety. **See attached ‘Sheet C4.1.’**
- 1.10 **365 Nevada Street - Sheet C5.1- Details and Sections**
 A. **ADD** sheet in its entirety. **See attached ‘Sheet C5.1.’**

List of Attachments

- Sheet C0.0 (30 x 42 dwg)
- Sheet C0.1 (30 x 42 dwg)
- Sheet C1.1 (30 x 42 dwg)
- Sheet C2.1 (30 x 42 dwg)
- Sheet C3.1 (30 x 42 dwg)
- Sheet C4.1 (30 x 42 dwg)
- Sheet C5.1 (30 x 42 dwg)

End of Addendum No.1

CIVIL ABBREVIATIONS AND LEGEND

ABBREVIATIONS

NOTE: NOT ALL ABBREVIATIONS MAY BE USED ON THESE PLANS.

AB

AGGREGATE BASE

AC

ASPHALTIC CONCRETE

AD

AREA DRAIN

APN

ASSESSOR'S PARCEL NUMBER

ARV

AIR RELEASE VALVE

ASB

AGGREGATE SUB-BASE

BO

BLOW-OFF VALVE

BV

BUTTERFLY VALVE

BW

BACK OF WALK

C/L

CENTERLINE

CB

CATCH BASIN

CL

CLASS

CMP

CORRUGATED METAL PIPE

CATV

CABLE TELEVISION

CO

CONCRETE

COMM

COMMUNICATION

CONC.

CONCRETE

CONST.

CONSTRUCT

CR

CURB RETURN

CS

CONCRETE SURFACE

DC

DOUBLE CHECK VALVE

DDC

DOUBLE DETECTOR CHECK VALVE

DG

DECOMPOSED GRANITE

DI

DROP INLET

DIA

DIAMETER

DIP

DUCTILE IRON PIPE

DWG

DRAWING

DS

DOWNSPOUT

E

ELECTRIC

ESMT

EDGE OF PAVEMENT EASEMENT

EX

EXISTING

FDC

FIRE DEPARTMENT CONNECTION

FL

FLOWLINE

FM

SANITARY SEWER FORCE MAIN

FF

FINISHED FLOOR ELEVATION

GH

GAS HYDRANT

G

GAS

GR

GRATE ELEVATION

GRD

GRADE ELEVATION

GV

GATE VALVE

HB

HOSE BIBB

HBD

HEADER BOARD

HDPE

HIGH DENSITY POLYETHYLENE PIPE

HP

HIGH POINT

INV

PIPE INVERT ELEVATION

JP

JOINT UTILITY POLE

LF

LINEAL FEET

LIP

LIP OF GUTTER

LT

LEFT

MS

MOWSTRIP

NTS

NOT TO SCALE

OH

OVERHEAD

PCC

PORTLAND CEMENT CONCRETE

PD

PLANTER DRAIN

PV

POST INDICATOR VALVE

P/L

PROPERTY LINE

PP

POWER POLE

PUE

PUBLIC UTILITY EASEMENT

PVC

POLYVINYL CHLORIDE

ROP

REINFORCED CONCRETE PIPE

R

RADIUS

RIM

MANHOLE RIM ELEVATION (SOLID COVER)

RP

REDUCED PRESSURE BACKFLOW PREVENTER

RW

RIGHT OF WAY

SCH

SCHEDULE

SD

STORM DRAIN

SDMH

STORM DRAIN MANHOLE

SG

SUBGRADE ELEVATION

SS

SANITARY SEWER

SSMH

SANITARY SEWER MANHOLE

STD

STANDARD

S/W

SIDEWALK

T

TELEPHONE

TC

TOP OF CURB

TD

TRENCH DRAIN

TCB

TRENCH DRAIN CATCH BASIN

TP

TELEPHONE POLE

TR

TOP OF RAMP ELEVATION

TRW

TOP OF RETAINING WALL

TSW

TOP OF SEAT WALL

U

UTILITY

UG

UNDERGROUND

UON

UNLESS OTHERWISE NOTED

VCP

VITRIFIED CLAY PIPE

W

WATER

W/

WITH

W/O

WITHOUT

WV

WATER VALVE

LEGEND

NOTE: NOT ALL SYMBOLS MAY BE USED ON THESE PLANS.

PROPOSED GRADING & DRAINAGE SYMBOLS:

8" SD

STORM DRAIN LINE (SIZE AND FLOW SHOWN)

STORM DRAIN MANHOLE (SDMH)

CATCH BASIN (CB)

DROP INLET (DI)

AREA DRAIN (AD)

PLANTER DRAIN (PD) OR FLOOR DRAIN (FD)

STORM DRAIN CLEANOUT

99.99

ELEVATION

FF=100.00

FINISHED FLOOR ELEVATION

PAD=99.33

BUILDING PAD ELEVATION

CONCRETE SIDEWALK

GRADED DIRECTION FOR DRAINAGE FLOW

SWALE

SLOPE

TREE TO BE REMOVED

RETAINING WALL

PROPOSED SANITARY SEWER SYMBOLS:

6" SS

SANITARY SEWER LINE (SIZE AND FLOW SHOWN)

SANITARY SEWER MANHOLE (SSMH)

SEWER CLEANOUT FLUSHER BRANCH

PROPOSED WATER SYMBOLS:

8" W

WATER LINE & SIZE

8" FS

FIRE LINE & SIZE

8" DW

DOMESTIC WATER LINE & SIZE

8" RW

RECLAIMED WATER LINE & SIZE

8" IRR

IRRIGATION SERVICE LINE & SIZE

8" NP

NON POTABLE WATER LINE & SIZE

8" SP

FIRE SPRINKLER SERVICE LINE & SIZE

GATE VALVE

WATER METER

FIRE HYDRANT ASSEMBLY

FIRE DEPARTMENT CONNECTION

DETECTOR CHECK VALVE

DOUBLE DETECTOR CHECK VALVE

REDUCED PRESSURE BACKFLOW PREVENTER

BUTTERFLY VALVE

AIR RELEASE VALVE + SIZE

BLOW-OFF VALVE + SIZE

POST INDICATOR VALVE

DEMOLITION GENERAL NOTES

1. IN THE EVENT THAT ANY UNUSUAL CONDITIONS NOT COVERED BY THE CONSTRUCTION DOCUMENTS ARE ENCOUNTERED DURING GRADING OPERATIONS THE ARCHITECT SHALL BE IMMEDIATELY NOTIFIED FOR DIRECTIONS.

2. NO BURNING OR BLASTING SHALL BE PERMITTED.

3. ADDITIONAL DEMOLITION INFORMATION MAY BE SHOWN ON THE GRADING, DRAINAGE, AND UTILITY PLANS, AND THOSE PLANS PREPARED BY OTHER DISCIPLINES FOR THIS PROJECT.

4. ALL DEMOLISHED ITEMS SHALL BE DISPOSED OF OFFSITE AT A SUITABLE, LEGAL, DUMP SITE OR OTHER FACILITY.

5. ALL DISPOSED OF MATERIALS SHALL BE RECYCLED IF POSSIBLE.

6. THE TYPES, LOCATIONS, SIZES AND/OR DEPTHS OF EXISTING UNDERGROUND UTILITIES AS SHOWN IN THESE PLANS WERE OBTAINED FROM SOURCES OF VARYING RELIABILITY. THE CONTRACTOR IS CAUTIONED THAT ONLY ACTUAL EXCAVATION WILL REVEAL THE TYPES, EXTENT, SIZES, LOCATIONS, AND DEPTHS OF SUCH UNDERGROUND UTILITIES. A REASONABLE EFFORT HAS BEEN MADE TO LOCATE AND DELINEATE ALL KNOWN UNDERGROUND UTILITIES. HOWEVER, WARREN CONSULTING ENGINEERS CAN ASSUME NO RESPONSIBILITY FOR THE COMPLETENESS OR ACCURACY OF ITS DELINEATION OF SUCH UNDERGROUND UTILITIES, NOR FOR THE EXISTENCE OF OTHER BURIED OBJECTS OR UTILITIES WHICH MAY BE ENCOUNTERED BUT WHICH ARE NOT SHOWN ON THESE DRAWINGS. THE CONTRACTOR OR ANY SUBCONTRACTOR FOR THIS CONTRACT SHALL NOTIFY THE DISTRICT TWO (2) WORKING DAYS IN ADVANCE OF PERFORMING ANY EXCAVATION WORK IN ORDER TO VERIFY TO THE GREATEST EXTENT POSSIBLE THE EXISTING UTILITY LINES, CONFLICTS AND PROPOSED UTILITY CONNECTION POINTS.

7. THE SCHOOL DISTRICT SHALL HAVE SALVAGE RIGHTS TO ANY DEMOLISHED ITEMS SHOWN HEREON. THE CONTRACTOR SHALL GIVE THE DISTRICT NOTICE 7 DAYS PRIOR TO THE START OF DEMOLITION. THE DISTRICT SHALL MOVE ANY RETAINED ITEMS OUT OF THE CONTRACTORS WORK AREA, UNLESS ANOTHER ARRANGEMENT IS MADE WITH THE CONTRACTOR. ANY REMAINING ITEMS BECOME THE PROPERTY OF THE CONTRACTOR AND SHALL BE REMOVED FROM THE SITE. ANY ITEMS NOT SHOWN FOR REMOVAL SHALL REMAIN AND SHALL BE PROTECTED FROM DAMAGE DURING CONSTRUCTION TO A REASONABLE EXTEND.

8. EXISTING UTILITY STRUCTURES IN AREAS OF NEW PAVING SHALL BE REMOVED AND REPLACED WITH NEW BOX/COVER AT NEW GRADE UNLESS SPECIFICALLY NOTED OTHERWISE.

9. ITEMS OUTSIDE THE LIMITS OF DEMOLITION SHALL REMAIN AND BE PROTECTED FROM DAMAGE DURING CONSTRUCTION.

10. EXISTING UTILITY STRUCTURES AND PIPING NOT SHOWN ON DEMOLITION PLAN TO BE REMOVED SHALL REMAIN AND BE PROTECTED.

UTILITY VERIFICATION NOTE

PRIOR TO THE START OF CONSTRUCTION, VERIFY AND POT HOLE ALL UTILITY POINTS OF CONNECTION FOR LOCATION, DEPTH, AND SIZE. IF CONFLICT IS FOUND, CONTACT THE ENGINEER IMMEDIATELY FOR DIRECTION.

IRRIGATION DEMOLITION NOTE

WITHIN LANDSCAPE AREAS TO BE DEMOLISHED THERE MAY BE EXISTING IRRIGATION LINES NOT SHOWN ON THIS PLAN. CONTRACTOR SHALL REMOVE LATERAL LINES AND HEADS ENCOUNTERED. MAIN LINES AND CONTROL WIRES MAY ONLY BE REMOVED PROVIDED THAT ROUTING IS KNOWN AND REMOVAL WILL NOT DEACTIVATE AN IRRIGATION SYSTEMS INTENDED TO REMAIN. IF CONFLICT IS FOUND, CONTACT THE ENGINEER FOR DIRECTION.

GENERAL NOTES:

1. THE TYPES, LOCATIONS, SIZES, AND/OR DEPTHS OF EXISTING UNDERGROUND UTILITIES AS SHOWN ON THESE PLANS WERE OBTAINED FROM SOURCES OF VARYING RELIABILITY. THE CONTRACTOR IS CAUTIONED THAT ONLY ACTUAL EXCAVATION WILL REVEAL THE TYPES, EXTENT, SIZES, LOCATIONS AND DEPTHS OF SUCH UNDERGROUND UTILITIES. A REASONABLE EFFORT HAS BEEN MADE TO LOCATE AND DELINEATE ALL KNOWN UNDERGROUND UTILITIES. HOWEVER, WARREN CONSULTING ENGINEERS CAN ASSUME NO RESPONSIBILITY FOR THE COMPLETENESS OR ACCURACY OF ITS DELINEATION OF SUCH UNDERGROUND UTILITIES, NOR FOR THE EXISTENCE OF OTHER BURIED OBJECTS OR UTILITIES WHICH MAY BE ENCOUNTERED BUT WHICH ARE NOT SHOWN ON THESE PLANS. THE CONTRACTOR OR ANY SUBCONTRACTOR FOR THIS CONTRACT SHALL NOTIFY MEMBERS OF UNDERGROUND SERVICE ALERT (USA) TWO (2) WORKING DAYS IN ADVANCE OF PERFORMING ANY EXCAVATION WORK BY CALLING TOLL FREE 1-800-227-2600, OR 811.

2. WARREN CONSULTING ENGINEERS, INC. (WCE) ASSUMES NO RESPONSIBILITY FOR ERRORS IN PHYSICAL LOCATION OF IMPROVEMENTS, HORIZONTAL OR VERTICAL, IF STAKED BY OTHERS. IN ADDITION, ANY SUCH ERRORS IN PHYSICAL LOCATION MAY AFFECT THE INTENDED DESIGN OF SUCH IMPROVEMENTS AND WCE CANNOT BE HELD RESPONSIBLE FOR SUCH CONDITIONS WHICH ARE A RESULT OF ERRORS IN SURVEYING, OR IMPROPER CONSTRUCTION.

3. IF SUBSURFACE CULTURAL RESOURCES, REMAINS, AND/OR ARTIFACTS ARE UNCOVERED DURING PROJECT CONSTRUCTION, ALL WORK IN THE WORK AREA SHALL BE STOPPED UNTIL SUCH ITEMS CAN BE ASSESSED BY AN APPROPRIATE MEMBER OF THE COUNTY ENVIRONMENTAL IMPACT SECTION STAFF.

4. CONTRACTOR AGREES THAT HE/SHE SHALL ASSUME SOLE AND COMPLETE RESPONSIBILITY FOR JOB SITE CONDITIONS DURING THE COURSE OF CONSTRUCTION OF THIS PROJECT, INCLUDING SAFETY OF ALL PERSONS AND PROPERTY. THAT THIS REQUIREMENT SHALL APPLY CONTINUOUSLY AND SHALL NOT BE LIMITED TO NORMAL WORKING HOURS. AND THAT THE CONTRACTOR SHALL DEFEND, INDEMNIFY AND HOLD THE OWNER AND ENGINEER HARMLESS FROM ANY AND ALL LIABILITY, REAL OR ALLEGED, IN CONNECTION WITH THE PERFORMANCE OF WORK ON THIS PROJECT, EXCEPTING FOR LIABILITY ARISING FROM THE SOLE NEGLIGENCE OF THE OWNER OR ENGINEER.

5. THE CONTRACTOR SHALL OBTAIN AN EXCAVATION PERMIT FROM THE STATE OF CALIFORNIA DEPARTMENT OF INDUSTRIAL SAFETY FOR ALL EXCAVATIONS OF 5 FEET OR MORE IN DEPTH.

6. IT SHALL BE THE CONTRACTOR'S RESPONSIBILITY TO MAKE ALL NECESSARY PRE-BID AND PRE-CONSTRUCTION SITE INSPECTION, AND/OR OBSERVATIONS ON THE SITE TO PRE-DETERMINE ALL HIS/HER MEANS AND METHODS NECESSARY TO COMPLETE THE IMPROVEMENTS SHOWN ON THESE PLANS AND PER THE PROJECT SPECIFICATIONS. IT IS THE CONTRACTORS RESPONSIBILITY TO DETERMINE, AND INCLUDE IN HIS/HER CONTRACT, ALL MEANS AND METHODS NECESSARY TO PERFORM A COMPLETE AND ACCEPTABLE JOB.

7. WHERE IMPROVEMENTS LIE WITHIN AN EXISTING DEVELOPED AREA, CONTRACTOR SHALL USE CAUTION WHEN ACCESSING THE SITE THROUGH THESE EXISTING IMPROVEMENTS. IT IS THE CONTRACTORS RESPONSIBILITY TO PROTECT ANY SUCH EXISTING IMPROVEMENTS OUTSIDE THE PROJECT BOUNDARY, OR EXISTING IMPROVEMENTS WITHIN THE BOUNDARY WHICH ARE TO REMAIN. PROPER PRECAUTIONS SHALL BE PROVIDED AND MAINTAINED THROUGHOUT CONSTRUCTION. ANY DAMAGE SHALL BE REPAIRED OR REPLACED TO THE SATISFACTION OF THE OWNER.

8. IT IS THE RESPONSIBILITY OF THE CONTRACTOR TO KEEP DETAILED RECORDS OF MINOR CHANGES OR ADJUSTMENTS MADE DURING CONSTRUCTION (WHICH WERE NOT FORMALLY ISSUED). UPON PROJECT COMPLETION, THESE RECORDS AND/OR INFORMATION SHALL BE PROVIDED TO THE OWNER AND WARREN CONSULTING ENGINEERS, INC. UNLESS AN OFFICIAL "AS-BUILT" SET OF PLANS IS A REQUIREMENT OF THE CONTRACT. IF AS-BUILT PLANS ARE A REQUIREMENT OF THE CONTRACT, REFER TO SPECIFICATIONS FOR AS-BUILT DELIVERABLE REQUIREMENTS.

9. IN VEHICULAR PATHWAYS, EXISTING ASPHALTIC AND/OR CONCRETE SURFACES SHALL BE CUT TO A NEAT AND STRAIGHT LINE, PARALLEL OR PERPENDICULAR TO THE VEHICULAR TRAVELED PATH. THIS IS TYPICALLY THE ROADWAY CENTERLINE, BUT MAY VARY. THE SAWCUT EDGE SHALL BE PROTECTED FROM DAMAGE DURING CONSTRUCTION SO A CLEAN EDGE REMAINS FOR PATCH BACK.. IF EDGE IS DAMAGED, A NEW SAW CUT WILL BE REQUIRED. THE EXPOSED EDGE SHALL BE "TACKED" WITH EMULSION PRIOR TO PAVING.

10. NO BURNING OR BLASTING SHALL BE ALLOWED ONSITE UNLESS SPECIFICALLY ADDRESSED ON PLANS, OR SPECIFICALLY APPROVED AND COORDINATED WITH THE ARCHITECT, ENGINEER, AND LOCAL AGENCY OR OTHER ADMINISTRATIVE AUTHORITY.

11. SUBGRADE AND RESULTING FINISHED GRADE SHALL BE CONSTRUCTED SMOOTH AND UNIFORM BETWEEN SPOT ELEVATIONS, CONTOURS OR OTHER STRUCTURE ELEVATIONS SHOWN ON GRADING OR OTHER PLANS. NO MOUNDS, RUTS, DEPRESSIONS OR OTHER GRADING DEFICIENCIES WILL BE ALLOWED UNLESS SPECIFICALLY SHOWN ON PLANS.

12. ON NEW WATER SYSTEMS, SERVICE LATERALS SHALL BE MADE USING APPROPRIATE "TEE" AND "WYE" FITTINGS. SADDLE TAPS WILL ONLY BE ALLOWED WHEN MAKING CONNECTIONS TO EXISTING WATER MAINS.

13. CURING COMPOUND SHALL BE APPLIED IN A CONTINUOUS SOLID WET FLOWING COAT. ANY "SPOTTY" APPLICATIONS SHALL BE RECOATED IMMEDIATELY. APPLICATION SHALL BE INSPECTED BY PROJECT INSPECTOR DURING APPLICATION.

14. EMBEDMENT OF FEATURES IN CONCRETE PAVING, CURBS, OR WALLS, SUCH AS SQUARE OR ROUND TUBING, POSTS, OR COLUMNS, STEEL BOLTED PLATES, OR OTHER STRUCTURES, SHALL REQUIRE ADDITIONAL SCORE OR EXPANSION JOINTS TO PREVENT UNCONTROLLED CRACKING. THESE ADDITIONAL JOINTS MAY OR MAY NOT BE SPECIFICALLY SHOWN ON PLANS BUT SHALL BE PROVIDED BY THE CONTRACTOR.

15. EMBEDMENT OF FEATURES IN CONCRETE PAVING, CURBS, OR WALLS, SUCH AS SQUARE OR ROUND TUBING, POSTS, OR COLUMNS, STEEL BOLTED PLATES, OR OTHER STRUCTURES, SHALL REQUIRE A MINOR ADJUSTMENT OF REBAR WITHIN CONCRETE TO ALLOW FOR SUCH STRUCTURE. THAT REBAR ADJUSTMENT MAY NOT BE SPECIFICALLY SHOWN ON PLANS.

16. NO MORE THAN 1 GALLON OF WATER PER YARD OF CONCRETE CAN BE ADDED TO THE TRUCK AFTER ARRIVAL TO PROJECT SITE. THE ADDITION OF WATER CAN ONLY BE ADDED UNDER THE SUPERVISION OF THE CONCRETE INSPECTOR OR LABORATORY TECHNICIAN.

17. WHEN PUMPING CONCRETE FOR PLACEMENT, ABSOLUTELY NO WATER IS TO BE ADDED TO PUMP HOPPER. ANY WATER ADDED TO HOPPER WILL BE REASON FOR CONCRETE REJECTION AT THE CONTRACTORS EXPENSE.

18. ALL CONTRACTION/CONSTRUCTION JOINTS "CJ" SHALL BE 1/4 THE SLAB THICKNESS DEEP, BUT NO LESS THAN 1" FOR CONTROLLING OF CRACKING. CONTRACTOR SHALL EXERCISE CAUTION WHEN FINAL TROWELING OF CONCRETE SO AS NOT TO FILL IN THESE JOINTS WITH CONCRETE CREAM. ANY CRACKS OUTSIDE OF JOINTS WHICH WERE CONSTRUCTED LESS THAN 1" DEEP, SHALL BE CAUSE FOR CONCRETE SLAB(S) TO BE REMOVED AND REPLACE AT CONTRACTORS EXPENSE.

19. ANY SCORED BOARDS SET WITHIN CONCRETE SLABS SHALL BE AN "OVERHEAD SCORED" SO THERE IS NO INTERFERENCE WITH THE PLACEMENT AND ALIGNMENT OF SLAB REINFORCING.

20. 3-1/2" FELT JOINTS WILL NOT BE ACCEPTED. PROVIDE A FULL 4" FELT JOINT FOR 4" SLAB CONSTRUCTION, AND A 6" FELT JOINT FOR A 6" SLAB SLAB CONSTRUCTION.

21. SHOULD ANY SHRINKAGE CRACKS OCCUR OUTSIDE OF EITHER THE EXPANSION JOINTS OR CRACK CONTROL JOINTS, THEN THE CONCRETE SLAB SHALL BE SAWCUT AT THE NEAREST JOINTS ON EACH SIDE OF THE CRACK AND THE CONCRETE SECTION SHALL BE REMOVED AND REPLACED. NEW CONCRETE SHALL BE DOWELED INTO EXISTING CONCRETE PER DRAWING DETAIL.

22. ALL AREAS DISTURBED BY GRADING OPERATIONS WHETHER SHOWN ON THE DRAWINGS OR NOT SHALL BE HYDRO SEEDED UNLESS OTHERWISE NOTED. HYDRO SEEDING SHALL CONFORM TO LOCAL CITY/COUNTY STANDARDS.

23. REPAIR OR PATCHING OF GALVANIZED METALS, SUCH AS AFTER WELDING GALVANIZED COMPONENTS, SHALL BE MADE USING A ZINC COMPOSITION "HOT STICK" APPLICATION PER ASTM A 780-01. GALVANIZING PAINTS WILL NOT BE ALLOWED.

811

Know what's below.
Call before you dig.

PCOE

PLACER COUNTY OFFICE OF EDUCATION

Revisions

Delta	Date	Revisions	By
-------	------	-----------	----

PLAN CHECK SET

ISSUE DATE: 07/21/23 BY: AT

ANTHONY J. TASSANO

REGISTERED PROFESSIONAL ENGINEER

NO. C74696

STATE OF CALIFORNIA

WCE

WARREN CONSULTING ENGINEERS, INC.

1117 WINDFIELD WAY, SUITE 110

EL DORADO HILLS, CA 95762 | (916) 985-1870

This document is the property of the Owner and is not to be used without its written permission

Architect/Engineer Of Record:

HY

HIBSER YAMAUCHI Architects, Inc.

4602 2nd Street, Suite 3

Davis, CA 95618

530.758.1270 tel | 530.758.4789 fax

HY Architects Project number: 5924

Facility

PLACER COUNTY OFFICE OF EDUCATION

360 NEVADA STREET, AUBURN, CA 95603

Project

SITE RENOVATION

Sheet Title

CIVIL GENERAL NOTES AND ABBREVIATIONS

Client Project Number: Client Proj:

Scale:

Drawn By: AT

Checked By: AT

Issue Date: 8/30/22

Revit Version: 2021

Sheet of

C0.0

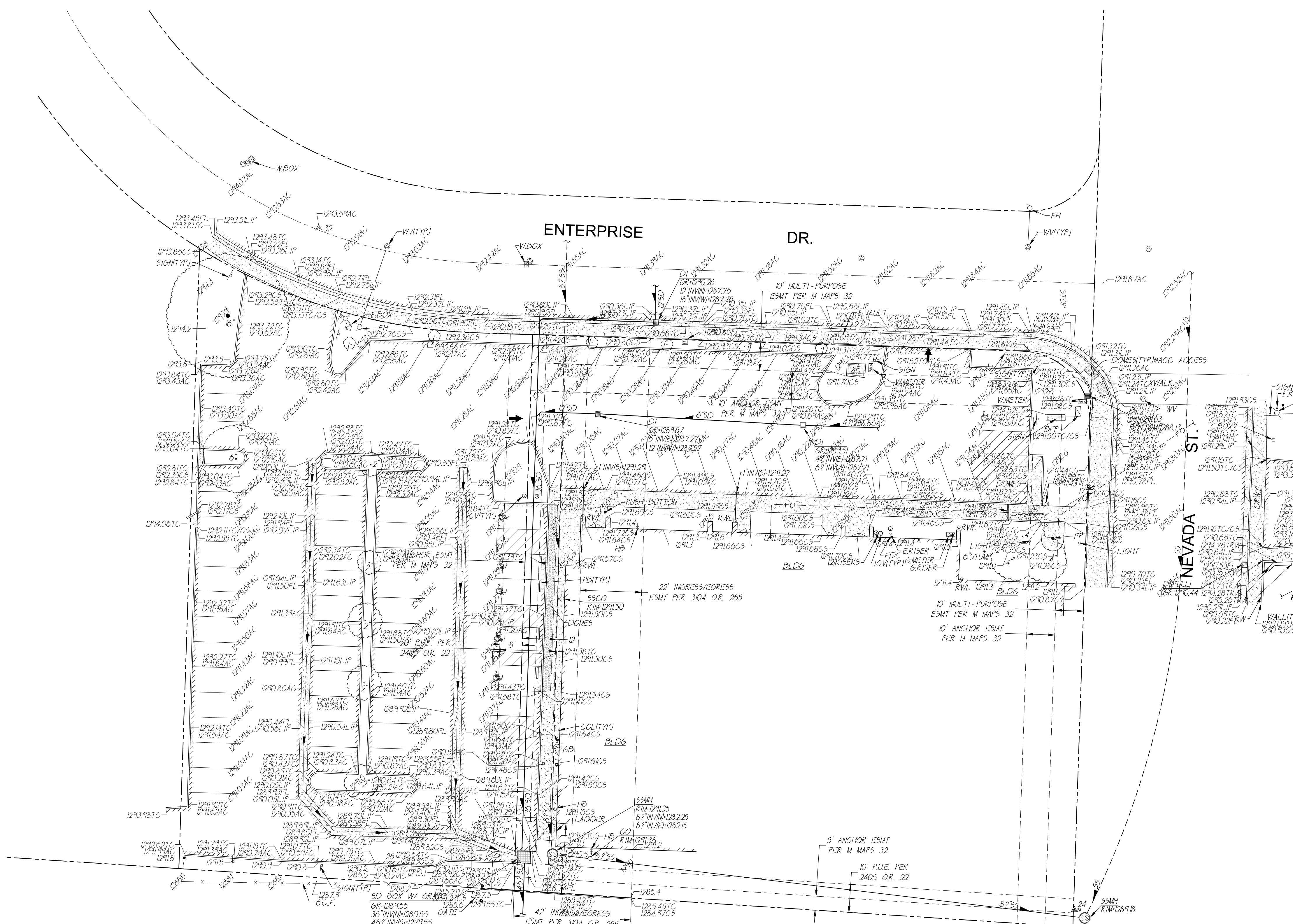
FILE: I:\23-032\CIVIL\DWGS\03-109-C00.DWG

SAVED: 7/10/2023 3:02 PM

PLOTTED: 7/12/2023 7:27 AM



IF THIS SHEET IS NOT 30"x42", IT IS
A REDUCED PRINT SCALE ACCORDINGLY



EXISTING TOPOGRAPHY

- P = PROPERTY LINE
- C = CENTERLINE
- E = EASEMENT
- = PROPERTY CORNER FOUND AS NOTED
- = PROPERTY CORNER NOTHING FOUND OR SET
- △ = TEMPORARY BENCHMARK (SEE TBM LIST FOR INFO)
- S = SWALE OR DRAINAGE FLOW
- D = DRAINAGE FLOW
- F = FENCE (TYPE NOTED)
- T = TREE (SIZE/TYPE INDICATED)
- S = SLOPE
- 100 = CONTOUR
- = CONCRETE SURFACE
- = EDGE OF ASPHALT
- = EDGE OF BUILDING
- = SIGN
- P = POST OR BOLLARD
- G = GROUND ELEVATION
- H = HARD SURFACE ELEVATION

EXISTING UTILITIES

- 12"SD = STORM DRAIN LINE (SIZE & DIRECTION OF FLOW)
- 12"SD = STORM DRAIN LINE (RECORD INFORMATION)
- 12"SD = STORM DRAIN LINE (UNDERGROUND LOCATING)
- = STORM DRAIN MANHOLE
- = STORM DRAIN CLEANOUT
- = DROP INLET
- = AREA DRAIN
- RWL = RAIN WATER LEADER
- DS = DOWNSPOUT
- 12"SS = SANITARY SEWER LINE (SIZE & DIRECTION OF FLOW)
- 12"SS = SANITARY SEWER LINE (RECORD INFORMATION)
- 12"SS = SANITARY SEWER LINE (UNDERGROUND LOCATING)
- = SANITARY SEWER MANHOLE
- = SANITARY SEWER CLEANOUT
- W = WATER LINE (SIZE INDICATED)
- W = WATER LINE (RECORD INFORMATION)
- W = WATER LINE (UNDERGROUND LOCATING)
- = WATER MANHOLE
- = WATER VALVE
- = WATER METER
- = WATER BOX
- = IRRIGATION CONTROL VALVE
- = FIRE HYDRANT
- = BACKFLOW PREVENTER
- = SPRINKLER
- OH-E = OVERHEAD ELECTRIC LINE
- E = UNDERGROUND ELECTRIC LINE
- E = UNDERGROUND ELECTRIC LINE (RECORD INFORMATION)
- E = UNDERGROUND ELECTRIC LINE (UNDERGROUND LOCATING)
- = ELECTRIC MANHOLE
- O- = UTILITY POLE (WITH GUY WIRE)
- = ELECTRIC METER
- = ELECTRIC BOX
- = STREET LIGHTING BOX
- = LIGHT STANDARD
- S = SIGNAL LIGHT
- F = FLOOD LIGHT
- O = ELECTRICAL OUTLET
- G = GAS LINE (SIZE INDICATED)
- G = GAS LINE (RECORD INFORMATION)
- G = GAS LINE (UNDERGROUND LOCATING)
- = GAS MANHOLE
- = GAS VALVE
- = GAS METER
- T = TELEPHONE LINE
- T = TELEPHONE LINE (RECORD INFORMATION)
- T = TELEPHONE LINE (UNDERGROUND LOCATING)
- = STORM DRAIN BOX
- = TRAFFIC SIGNAL BOX

ABBREVIATIONS

- NOTE: NOT ALL ABBREVIATIONS MAY BE USED ON THESE PLANS.
- AC ASPHALTIC CONCRETE
 - ACC ACCESSIBLE
 - AD AIR CONDITIONING UNIT
 - AD AREA DRAIN
 - APN ASSessor's PARCEL NUMBER
 - APP APPARATUS
 - BALL BASKETBALL POLE
 - BCM BRASS CAP MONUMENT
 - BFP BACK FLOW PREVENTER
 - BL BLOCK
 - BOL BUILDING
 - BOL BOLLARD
 - BOV BLOW-OFF VALVE
 - BR BRICK
 - B.W.F. BARBED WIRE FENCE
 - C COMMUNICATION
 - C/L CENTERLINE
 - CATV CABLE TELEVISION
 - CIP CAPPED IRON PIPE
 - C.L.F. CHAIN LINK FENCE
 - CMP CORRUGATED METAL PIPE
 - CO CLEANOUT
 - COL COLUMN
 - CONC. CONCRETE
 - COND. CONDENSATE
 - CPF CONTROL POINT FOUND
 - CPS CONTROL POINT SET
 - CS CONCRETE SURFACE
 - DF DEPTH
 - DG DRINKING FOUNTAIN
 - DI DECOMPOSED GRANITE
 - DI DROP INLET
 - DIA DIAMETER
 - DRWY DRIVEWAY
 - DS DOWNSPOUT
 - DWG DRAWING
 - E ELECTRIC
 - EP EDGE OF PAVEMENT
 - EASEMENT EASEMENT
 - FA FIRE ALARM
 - FDC FIRE DEPARTMENT CONNECTION
 - FFE FINISHED FLOOR ELEVATION
 - FH FIRE HYDRANT
 - FL FLOWLINE
 - FO FIBER OPTIC
 - FS FIRE SERVICE
 - FAS FAS
 - GB GRADE BREAK
 - GR GRADE
 - GRB GROUND ROD BOX
 - GROD GROUND ROD
 - GV GAS VALVE
 - HB HOSE BIBB
 - HBD HEADER BOARD
 - HP HIGH PRESSURE
 - HANDL HANDRAIL
 - HVE HIGH VOLTAGE ELECTRIC
 - IC IN CONCRETE
 - ICP IRRIGATION CONTROL PANEL
 - ICV IRRIGATION CONTROL VALVE
 - INV PIPE INVERT ELEVATION
 - IRR IRRIGATION
 - JP JOINT UTILITY POLE
 - JT JOINT TRENCH
 - LANDG LANDING
 - LVE LOW VOLTAGE ELECTRIC
 - MANHOLE MANHOLE
 - MH MOW STRIP
 - MS METAL STORAGE CONTAINER
 - NTS NOT TO SCALE
 - OH OVERHEAD
 - OHANG OVERHANG
 - OIP OPEN IRON PIPE
 - OSPH OLD STEEL POST HOLE
 - P/L PROPERTY LINE
 - PA PLANTER AREA
 - PB PARKING BUMPER
 - PH POSTHOLE
 - PIV POST INDICATOR VALVE
 - PP POWER POLE
 - PRKG PARKING
 - PUE PUBLIC UTILITY EASEMENT
 - PV PAVERS
 - PVC POLYVINYL CHLORIDE
 - R RUBBER
 - RG ROLLING GATE
 - RIM MANHOLE RIM ELEVATION
 - RIM RIGHT OF WAY
 - RWD RETAINING WALL
 - RWD REDWOOD
 - RWL RAIN WATER LEADER
 - SD STORM DRAIN
 - SDMH STORM DRAIN MANHOLE
 - SIG SIGNAL
 - SLB STREET LIGHT BOX
 - SLB STREET LIGHT
 - SSO SANITARY SEWER
 - SSCO SANITARY SEWER CLEANOUT
 - SSMH SANITARY SEWER MANHOLE
 - STL STEEL
 - T TELEPHONE
 - TBALL TETHER BALL POLE
 - TBM TEMPORARY BENCHMARK
 - TC TOP OF CURB
 - TP TOP OF PAVEMENT
 - TRW TOP OF RETAINING WALL
 - UG UNDERGROUND
 - UNK UNKNOWN
 - V VENT
 - VBALL VOLLEYBALL
 - W WATER
 - W/ WITH
 - WD WOOD
 - W.F. WROUGHT IRON FENCE
 - W.R.F. WOOD RAIL FENCE
 - X TRANSFORMER
 - XWALK CROSSWALK

TBM LIST

NUMBER	DESCRIPTION	NORTHING	EASTING	ELEVATION
1	CPS PICKER IN TC	9966.81	9996.98	1282.72
2	CPS CHISELED "+"	10010.73	9621.56	1270.91
3	CPF SURVEY PLUG	10096.00	10035.28	1293.82
4	CPS CHISELED "+"	10192.27	9980.40	1300.35
5	CPS MAG NAIL	10087.64	10155.21	1296.03
6	CPS CHISELED "+"	10001.20	10387.60	1279.93
7	CPF CHISELED "+"	10010.30	10092.36	1285.74
8	CPF CHISELED "+"	10028.31	9693.78	1271.49
9	CPF PLA CO F10-12 1978	10295.34	10004.64	1304.51
10	CPF BENT PK	10238.45	9907.21	1303.15
12	CPS CHISELED "+"	10830.64	9905.20	1292.68
13	CPS CHISELED "+"	10846.20	9948.55	1298.44
14	CPS CHISELED "+"	10904.66	9863.30	1297.29
15	CPS CHISELED "+"	10974.71	9938.20	1302.26
16	CPS CHISELED "+"	11049.70	9807.86	1298.75
17	CPS CHISELED "+"	11121.78	9670.22	1291.25
18	CPS PK+WASHER	11129.21	10190.97	1310.33
19	CPS CHISELED "+"	11105.91	10085.94	1302.91
20	CPS CHISELED "+"	11114.32	9961.63	1302.30
21	CPS CHISELED "+"	10443.17	10034.04	1313.64
22	CPS CHISELED "+"	10961.39	9825.78	1298.76
23	CPS CHISELED "+"	10903.21	9749.04	1298.22
24	CPS CHISELED "+"	10970.92	9664.80	1289.31
25	CPF RR SPIKE LS7887	10832.66	9734.94	1287.07
26	CPS CHISELED "+"	10987.14	9420.75	1290.71
27	CPS CHISELED "+"	11476.22	9741.13	1298.98
28	CPS CHISELED "+"	10793.92	9739.50	1286.84
29	CPF CHISELED "+"	10914.46	9664.99	1288.12
30	CPF RR SPIKE LS7887	10823.93	9896.64	1292.29
31	CPF RR SPIKE LS7887	10816.04	10139.98	1301.38
32	CPF PK	11214.44	9394.81	1293.74
33	CPS PK+WASHER	11143.58	9960.31	1306.36
34	CPS CHISELED "+"	11069.61	9865.08	1299.32

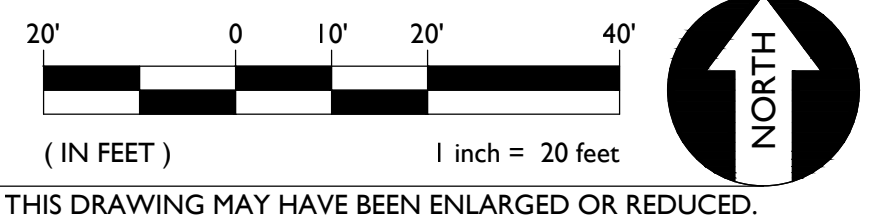
BASIS OF BEARINGS:

ASSUMED

E.M.A. INFORMATION:
THE SUBJECT PROPERTY IS LOCATED
IN "ZONE X"—AREA OF MINIMAL
FLOOD HAZARD" PER FLOOD
INSURANCE RATE MAP 06061C0762H
DATED NOVEMBER 2, 2018.

NOTE:
EXISTING UTILITIES BASED ON
VISIBLE SURFACE STRUCTURES
AND RECORD INFORMATION.

GRAPHIC SCALE



THIS DRAWING MAY BE ENLARGED OR REDUCED.



Revisions

Delta	Date	Revisions	By
-------	------	-----------	----

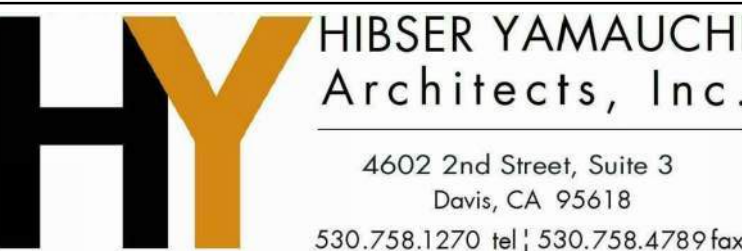
PLAN CHECK SET

ISSUE DATE: 07/21/23 BY: AT



WARREN CONSULTING ENGINEERS, INC.
1117 WINDFIELD WAY, SUITE 110
EL DORADO HILLS, CA 95762 | (916) 985-1870

This document is the property of the Owner and is not to be used without his written permission.
Architect/Engineer Of Record:



HY Architects Project number: 5924

Facility
PLACER COUNTY OFFICE OF EDUCATION
360 NEVADA STREET, AUBURN, CA 95603

Project
SITE RENOVATION

Sheet Title

TOPOGRAPHIC SURVEY

Client Project Number: Client Proj.

Scales: Drawn By: AT

Checked By: AT

Issue Date: 8/30/22

Revit Version: 2021

C0.1

Sheet of



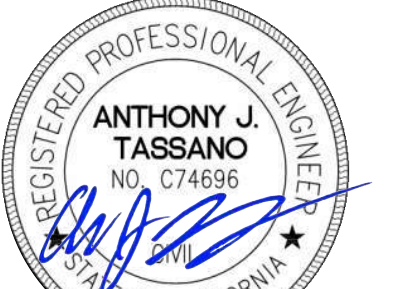
IF THIS SHEET IS NOT 30"x42", IT IS
A REDUCED PRINT SCALE ACCORDINGLY



Revisions			
Delta	Date	Revisions	By

PLAN CHECK SET

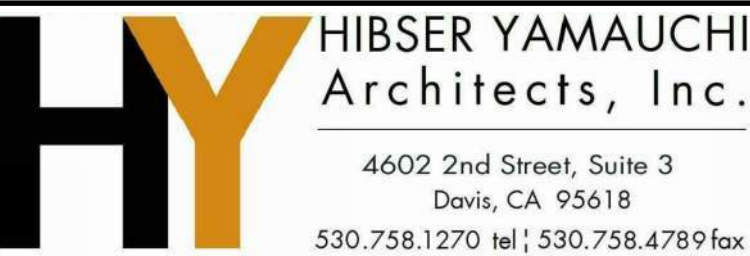
ISSUE DATE: 07/21/23 BY: AT



WARREN CONSULTING ENGINEERS, INC.
1117 WINDFIELD WAY, SUITE 110
EL DORADO HILLS, CA 95762 | (916) 985-1870

This document is the property of the Owner and is not to be used without his written permission.

Architect/Engineer Of Record:



4602 2nd Street, Suite 3
Davis, CA 95618
530.758.1270 tel; 530.758.4789 fax

HY Architects Project number: 5924

Facility

PLACER COUNTY OFFICE OF EDUCATION
360 NEVADA STREET, AUBURN, CA 95603

Project

SITE RENOVATION

Sheet Title

PAVING AND
STRIPING PLAN

Client Project Number: Client Proj:

Scale:

Drawn By: AT

Checked By: AT

Issue Date: 8/30/22

Revit Version: 2021 Sheet of

C3.1

PAVING GENERAL NOTES:

1. AGGREGATE BASE SHALL MEET CALTRANS SPECIFICATIONS FOR CLASS II AGGREGATE BASE.
2. ALL AGGREGATE BASE SHALL BE MOISTURE CONDITIONED TO, OR SLIGHTLY ABOVE, OPTIMUM MOISTURE CONTENT AND COMPACTED TO 95% RELATIVE COMPACTION.
3. RECYCLED ASPHALT MAY BE USED AS CONCRETE AND ASPHALT BASE MATERIAL PROVIDED IT MEETS CALTRANS SPECIFICATIONS FOR CLASS II AB.
4. PAVEMENT SUBGRADE PREPARATION, I.E. SCARIFICATION, MOISTURE CONDITIONING, AND COMPACTION SHALL BE PERFORMED AFTER:
A. POT HOLE ALL EXISTING UTILITIES.
B. THE INSTALLATION OF UNDERGROUND UTILITIES AND TRENCHES BACKFILLED IN ACCORDANCE WITH THESE PLANS.
6. ALL AREAS DISTURBED BY GRADING, DEMOLITION, OR CONSTRUCTION ACCESS, WHICH ARE NOT SURFACED BY THIS SET OF PLANS, OR LANDSCAPE PLANS, SHALL BE RESTORED.
7. REFER TO GRADING PLANS FOR CURBS, CURB GUTTERS, VALLEY GUTTERS, AND OTHER CONCRETE STRUCTURES AND PAVING FEATURES NOT SPECIFICALLY NOTED ON THIS PLAN.
8. ADJUST TO FINISH GRADE ALL BOXES, FRAMES, COVERS SLEEVES, POST HOLES, GRATES, ETC. FOUND IN NEW ASPHALT OR CONCRETE PAVING AREAS, WHICH ARE NOT NOTED FOR REMOVAL. REPLACE PER PLAN.

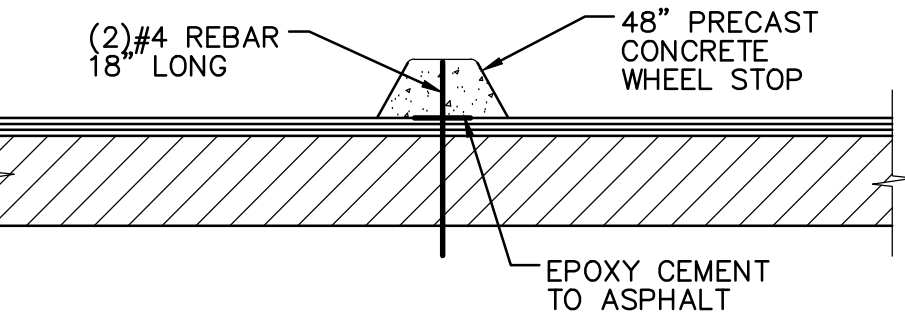
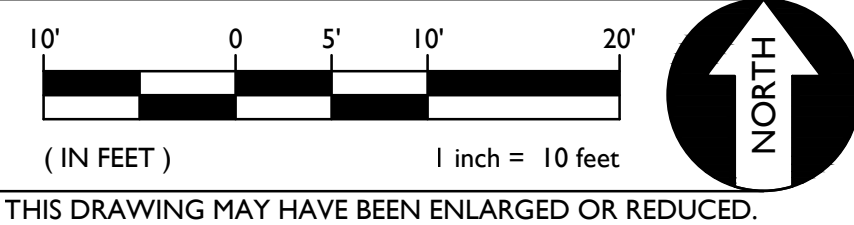
PAVING LEGEND

- 1 TYPE 1 PAVING**
PLACE 3" AC OVER 12" CLASS II AB ON SUBGRADE COMPACTED PER SPECIFICATIONS. PLACE TWO (2) APPLICATIONS OF SEAL COAT ON NEW PAVING.
- 2 TYPE 2 PAVING**
PLACE 5" PCC WITH #4 REBAR @ 24" O.C.E.W. OVER 4" CLASS II AB ON SUBGRADE COMPACTED PER SPECIFICATIONS.
- 3 TYPE 3 PAVING**
PLACE 6" PCC WITH #4 REBAR @ 18" O.C.E.W. OVER 6" CLASS II AB ON SUBGRADE COMPACTED PER SPECIFICATIONS.
- 4 TYPE 4 PAVING**
BLACK OUT EXISTING STRIPING, CRACK FILL AND PROVIDE TWO (2) APPLICATIONS OF SEAL COAT ON EXISTING PAVEMENT.

STRIPING LEGEND

11. PROVIDE 4" WIDE WHITE PARKING STALL STRIPING.
12. PROVIDE 4" WIDE, WHITE, DIAGONAL STRIPING @ 36" O.C.
13. PROVIDE CONCRETE WHEEL STOP PER **1 C3.1**

GRAPHIC SCALE



1 CONCRETE WHEEL STOP
C3.1
NO SCALE

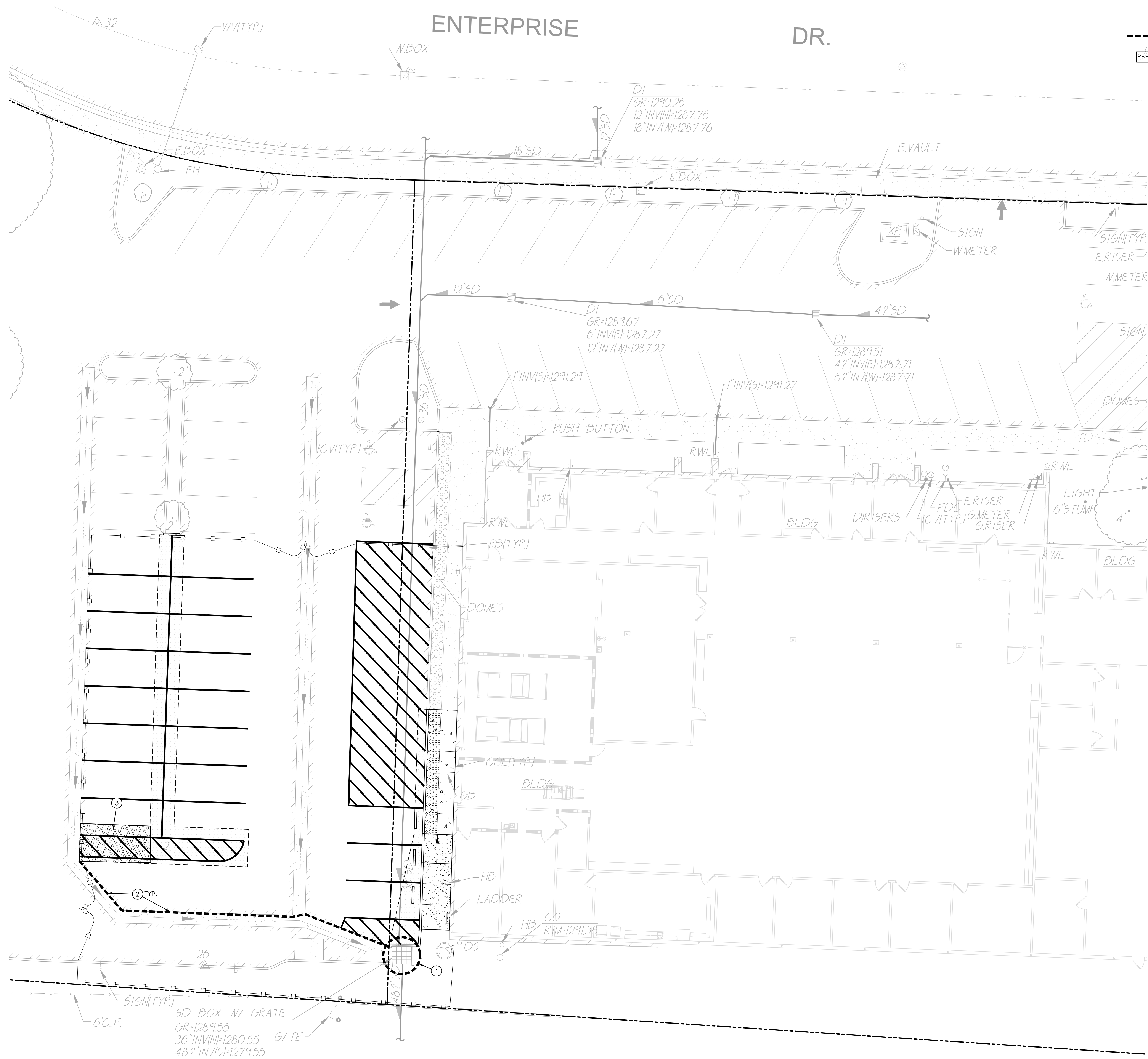
PLOTTED 7/21/2023 7:18 AM

FILE: I:\23-032\CIVIL\DWG\03-092-C31.DWG







SAVED: 7/21/2023 8:51 AM

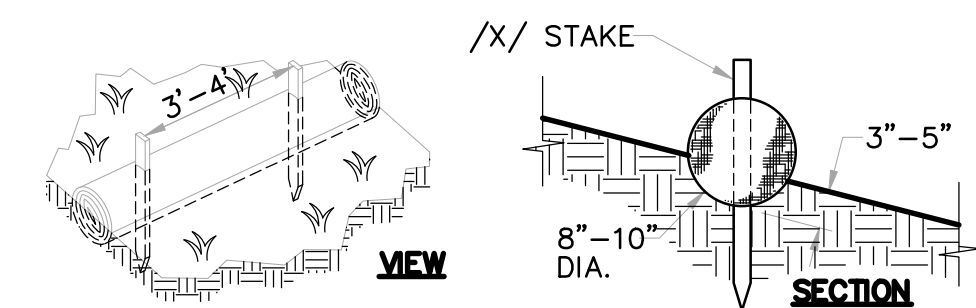


IF THIS SHEET IS NOT 30"x42" , IT IS
A REDUCED PRINT SCALE ACCORDINGLY



EROSION CONTROL NOTES

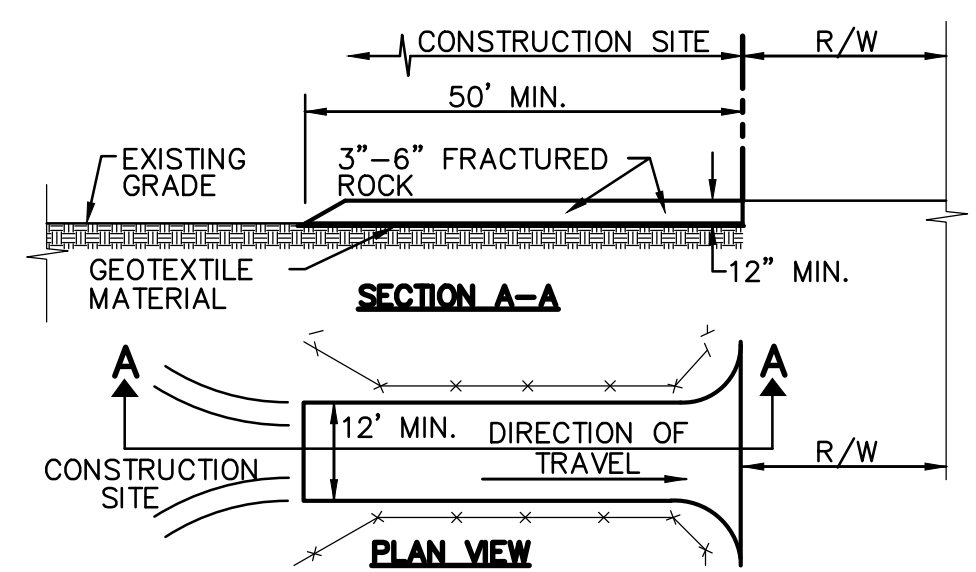
- | | | | |
|---|----|---|--|
|  | ① | CONTRACTOR SHALL PROVIDE STRAW WATTLE BARRIER AND FILTER BAG AT ALL INLETS (NEW AND/OR EXIST.) IN AREAS OF WORK, OR AS REQUIRED BY SPECS. | 
③
C4.1 |
|  | ② | CONTRACTOR SHALL PROVIDE STRAW WATTLES AT PERIMETER OF SITE AND IN AREAS REQUIRED BY SPECS. | 
①
C4.1 |
|  | ③ | CONTRACTOR SHALL PROVIDE STABILIZED CONSTRUCTION SOIL ACCESS PER DETAIL AT LOCATION REQUIRED FOR CONSTRUCTION ACTIVITIES. | 
②
C4.1 |
| | 4. | CONTRACTOR SHALL MAINTAIN ALL STRAW WATTLES AND OTHER STORM WATER POLLUTION PREVENTION DEVICES THROUGHOUT CONSTRUCTION. REMOVE ALL POLLUTION PREVENTION DEVICES AT THE END OF CONSTRUCTION AS REQUIRED. | |
| | 5. | PRIOR TO PLACEMENT OF LANDSCAPING AND/OR FINISHED GROUND SEEDING, REMOVE TEMPORARY EROSION CONTROL MEASURES. | |
| | 6. | CONTRACTOR SHALL PROVIDE AND MAINTAIN FILTER BAGS AT ALL INLETS. | |



NOTE:
STRAW ROLL INSTALLATION REQUIRES THE PLACEMENT AND
SECURE STAKING OF THE ROLL IN A TRENCH, 3"-5" DEEP,
DUG ON CONTOUR. RUNOFF MUST NOT BE ALLOWED TO
RUN UNDER OR AROUND ROLL.

STRAW WATTLES

NO SCALE

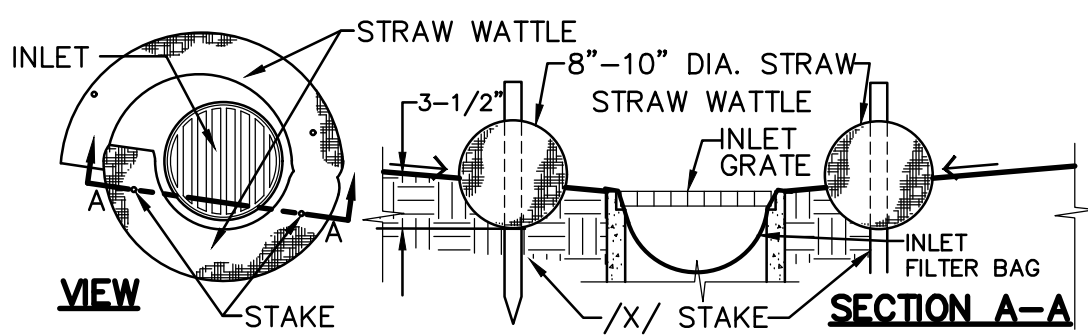


NOTES:

1. STABILIZED CONSTRUCTION SITE ACCESS SHALL BE CONSTRUCTED OF 3"-6" ANGULAR ROCK MATERIAL CONFORMING TO SECTION 26 OF STATE SPECIFICATIONS PLACED OVER A CLASS 2 NON-WOVEN GEOTEXTILE MATERIAL. ROCK SHALL BE PLACED TO A MINIMUM THICKNESS OF SIX INCHES. THE METHOD OF PLACING, SPREADING AND COMPACTING ROCK SHALL CONFORM TO SECTION 26 OF THE STATE SPECIFICATIONS.
2. LENGTH OF SITE ACCESS SHALL BE A MINIMUM LENGTH OF FIFTY FEET. WIDTH SHALL BE A MINIMUM WIDTH OF TWELVE FEET OR AS NECESSARY TO COVER ALL VEHICULAR INGRESS AND EGRESS.
3. THE SITE ACCESS SHALL BE KEPT IN GOOD CONDITION BY OCCASIONAL TOP DRESSING.

STABILIZED CONSTRUCTION SITE ACCESS

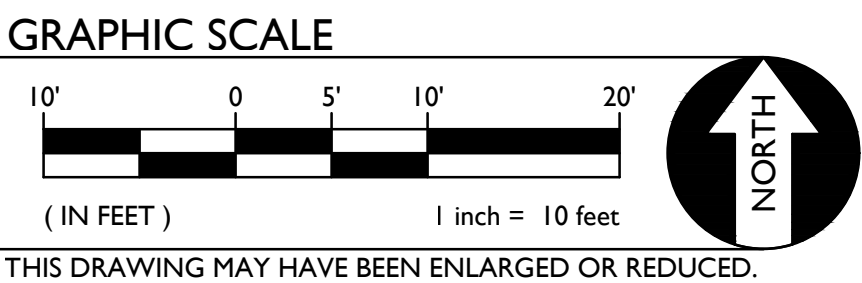
NO SCALE



NOTE: STRAW WATTLE INSTALLATION REQUIRES THE PLACEMENT AND SECURE STAKING OF THE WATTLE IN A TRENCH, 3-1/2" DEEP, DUG ON CONTOUR. RUNOFF MUST NOT BE ALLOWED TO RUN UNDER OR AROUND ROLL.

STRAW WATTLE INLET FILTER

NO SCALE



Revisions			
Delta	Date	Revisions	By



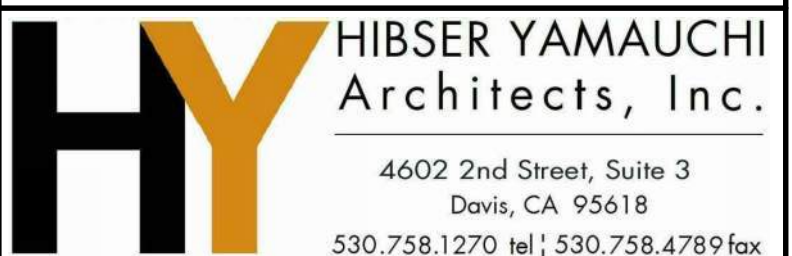
PLAN CHECK SET

ISSUE DATE: 07/21/23 BY: AT



This document is the property of the Owner and is not to be used without his written permission.

Architect/Engineer Of Record: _____



HY Architects Project number: 5924

Facility
PLACER COUNTY OFFICE OF EDUCATION
360 NEVADA STREET, AUBURN, CA 95603

Project

SITE RENOVATION

Sheet Title

EROSION CONTROL PLAN

Client Project Number:

Client Proj.

Scale:

Drawn By: AT

Checked By: AT

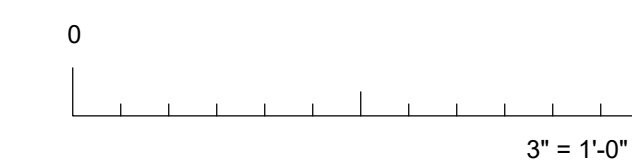
Issue Date: 8/30/22

Revit Version: 2021

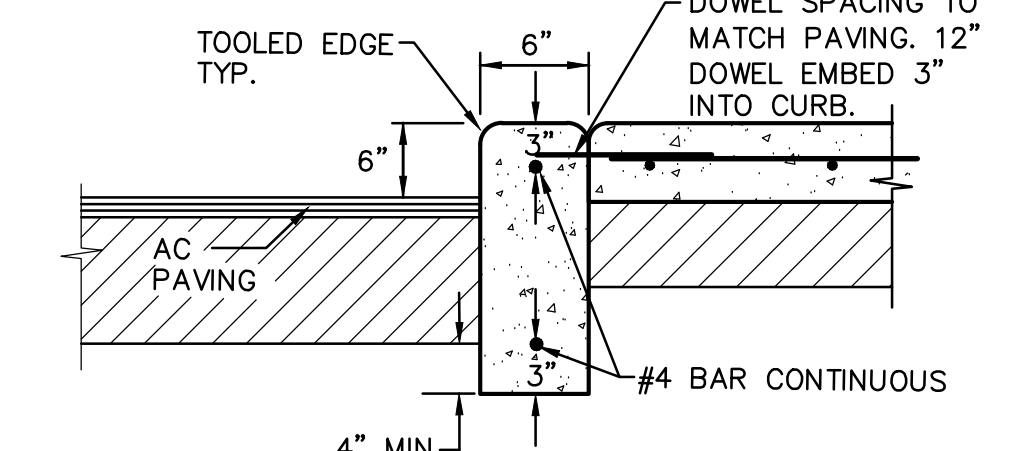
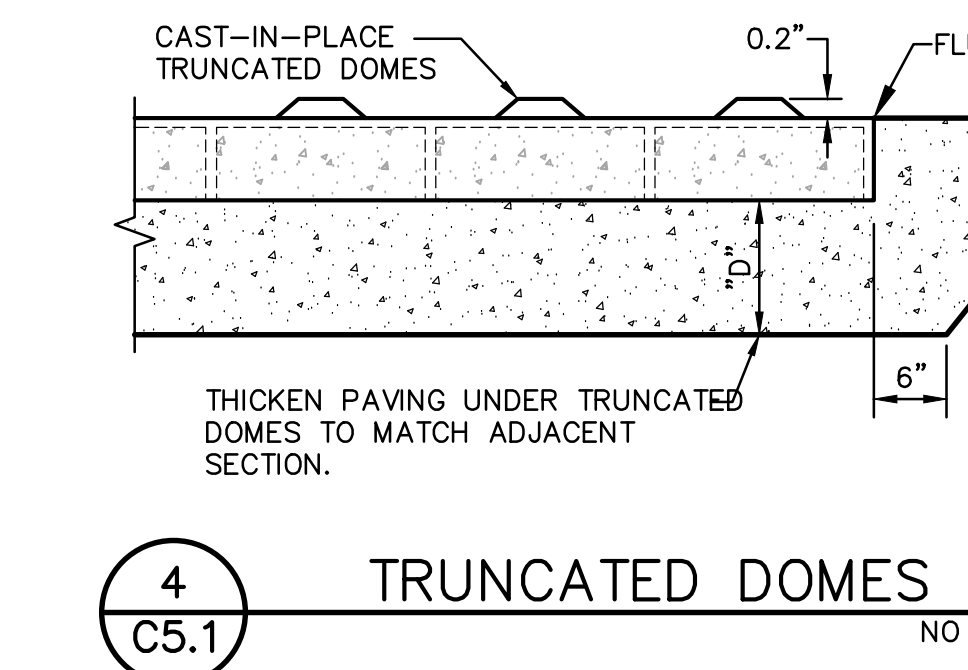
Shee

Sheet of _____

C4.1



PCOE
PLACER COUNTY OFFICE OF EDUCATION



- 2 CONCRETE CURB
C5.1 NO SCALE